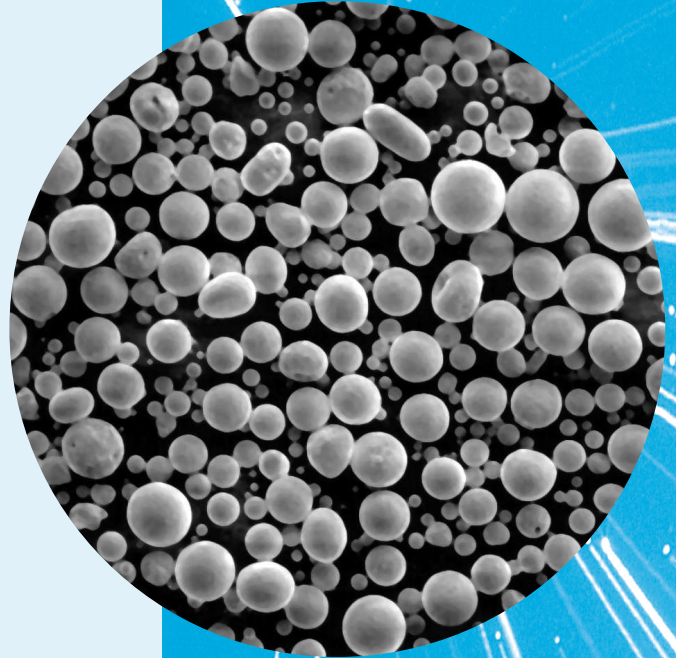


# Saint-Gobain Thermal Spray Powders Conversion Chart

Material	Saint-Gobain Number	Sulzer Metco Number	Stark Number	Praxair Number
Alumina Titania	#103	-	-	-
Alumina Titania	#106	Amdry 6228	744.1	ALO-187
Alumina Titania	#107	Amdry 6224	744.3	ALO-188
Alumina Titania	#108	Amdry 6254	745.1	ALO-121
Alumina Titania	#109	Amdry 6250	745.3	-
Aluminum Oxide	#110	Metco 101NS Amdry 187F	742.1	ALO-105
Aluminum Oxide	#112	Metco 101B-NS Amdry 187C	742.407	ALO-159
Aluminum Oxide	#114	-	742.8	-
Aluminum Oxide	#115	-	742.8	-
Aluminum Oxide	#116	-	742.1	-
Aluminum Oxide	#117	Metco 101SF	742.0	-
Aluminum Oxide	#119	-	742.1	-
Aluminum Oxide	#150	Metco 105SFP	740.0	ALO-101
Aluminum Oxide	#153PT	-	-	-
Magnesium Aluminate (Spinel)	#170	-	760.1	-
Magnesium Aluminate (Spinel) Spherical	#171	-	-	-
Aluminum Oxide	#182	Metco 105NS, Amdry 180	-	ALO-101
Aluminum Oxide	#183	Metco 105NS, Amdry 180	-	ALO-101
Aluminum Oxide	#184	Metco 105SFP	-	-
Aluminum Oxide	#185	-	-	-
Ultra Pure Alumina Spherical	#199	-	-	-
Low Silica ZrO <sub>2</sub>	#232	-	-	-
Magnesium Zirconate	#233	Metco 210NS-1 Metco 210NS-1-G	811.4	ZRO-103
Zirconium Oxide (Calcin)	#235	Metco 201 B-NS	-	-
Zirconium Oxide (Calcin)	#252	Metco 201NS	800.1	-
Zirconium Oxide (Yttria)	#202	Metco 202NS	-	ZRO-110
Zirconium Oxide (Yttria)	#204	Metco 204NS	825.423	ZRO-114
Zirconium Oxide (Yttria)	#204B	Metco 204BNS	-	-
Zirconium Oxide (Yttria)	#204PR	Metco 204C-NS	-	ZRO-196
Zirconium Oxide (Yttria)	#222	Metco 205NS	-	-
Alumina-Zirconia	#290	-	-	-
Chromium Oxide	#324	-	-	-
Chromium Oxide	#327	Amdry 6417	-	-
Chromium Oxide	#328	Amdry 6420	-	-
Chromium Oxide - Silica	#338	-	-	-
Chromium Oxide - Silica	#339	-	-	CRO-178
Chromium Oxide - Titania	#301	-	-	-
Chromium Oxide - Titania	#302	Metco 106F	710.1	-
Chromium Oxide - Titania	#306	Metco 106	-	-
Chromium Oxide - Titania	#307	Metco 106F	710.1	-
Chromium Oxide - Silica-Titania	#340	Metco 136CP	-	-
Chromium Oxide -Silica-Titania	#341	Metco 136F	715.1	CRO-192
Chromium Oxide	#2020/3030	-	700.3	CRO-167
Chromium Oxide	#3031	-	700.0	CRO-179
Chromium Oxide	#2021/3032	-	700.0	CRO-179
Chromium Oxide	#3033	-	700.8	-
Titania	#1000	-	-	-
Titania	#1001	Metco 102	780.3	-
Aluminate Titanate	#1010	-	-	-
Mullite	#1020	-	-	-



## Ceramic Materials

1 New Bond Street,  
PO Box 15137, Worcester, MA 01615-0137  
Tel: 508-795-5000 • Fax: 508-795-5868

The information contained in this document is believed to be accurate and reliable but is presented without guarantee or warranty on the part of Saint-Gobain Ceramics and Plastics Inc. Further, nothing present herein should be interpreted as an authorization or inducement to practice any patented invention without an appropriate license.

6100-B5 Rev.4/01