



Surfit™ 316L

Manufacturing Process

Gas Atomised

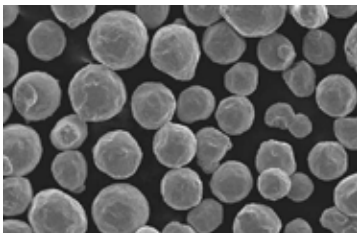
Origin: Belgium

Article No. 117729

Features & Benefits

stainless steel
good corrosion resistance
recommended for
" build-up layers"

PTA - Fe base



Application Properties

Hardness

Solidus

Liquidus

Physical Properties

Apparent Density

Flow

Chemical Analysis

Fe

C

Si

Mn

Ni

Cr

Mo

Sieve Analysis

| µm | Mesh |
|--------|------|
| + 180 | +80 |
| + 150 | +100 |
| 53-150 | |
| -53 | -270 |

Standard Packaging

Bottle 5 kg

Product Data Sheet

Typical Values

160

1375

1430

Unit

HV₃₀

°C

°C

Typical Values

4,6

15,5

Unit

g/cm³

s/50g

Product Specifications

| Min | Max | Unit |
|---------|------|------|
| balance | | % |
| | 0,03 | % |
| | 1,0 | % |
| 1,0 | 2,0 | % |
| 10,0 | 14,0 | |
| 16,0 | 18,0 | % |
| 2,0 | 3,0 | |

Product Specifications

| Min | Max | Unit |
|---------|------|------|
| | 0,00 | % |
| | 3,00 | % |
| balance | | |
| | 1,20 | % |